

This study measures the impact of Project QUEST on the San Antonio metropolitan area economy over the organization's 30-year history.

The study is based on actual data provided by Project QUEST. Data includes information on each graduate's annual wage before they entered the QUEST program, the wage they earned in their first job upon graduation from the program, their career track, and the date they graduated from the program.

Conducted by Steven R. Nivin, Ph.D., LLC

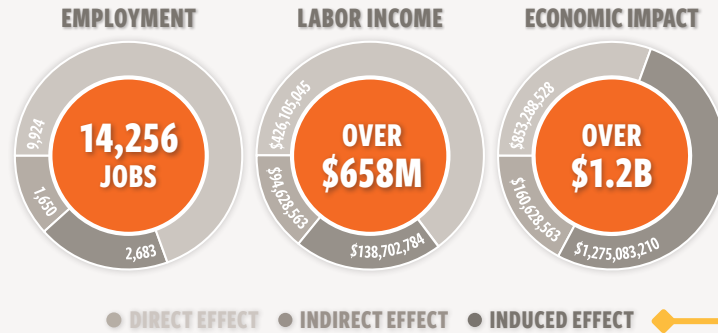
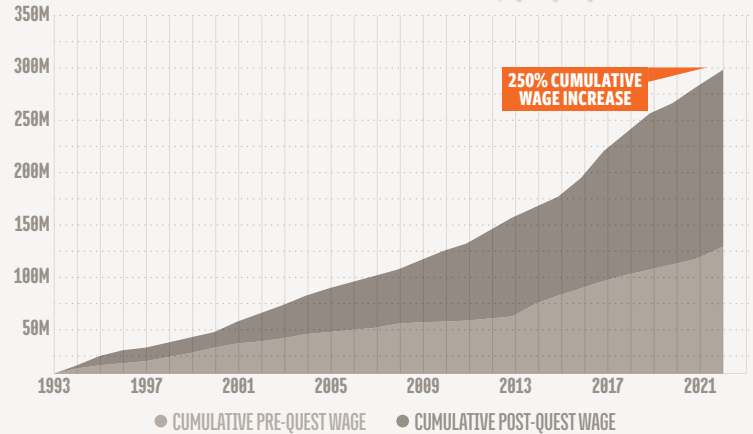
GRADUATES INCREASE IN INCOME

\$2,035,837,129

▲ \$14.18 PER FUNDED DOLLAR

The cumulative wages of these graduates have increased by approximately 250%.

TOTAL CUMULATIVE INCREASE IN WAGES = \$2,035,837,129



ECONOMIC IMPACT OF SPENDING

\$1,275,083,210

▲ \$8.88 PER FUNDED DOLLAR

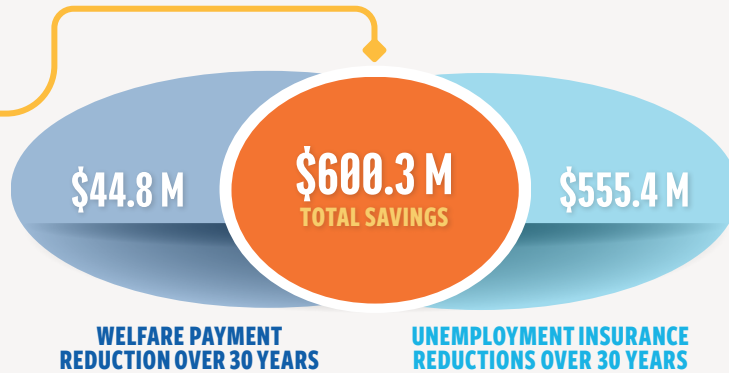
The increase in income earned by graduates has led to a rise in personal spending, catalyzing even more economic growth.

SOCIAL SAVINGS

\$600,303,294

▲ \$4.18 PER FUNDED DOLLAR

With an increasing number of graduates, the savings to society from reduction welfare and unemployment insurance payments has grown accordingly.



GRADUATE DEMOGRAPHICS

69
% WOMEN

65
% HISPANIC

14
% AFRICAN AMERICAN

51
% RECEIVE PUBLIC ASSISTANCE

32
% SINGLE PARENTS

TOTAL IMPACT OVER 30 YEARS

\$4 BILLION

\$27.24 PER FUNDED DOLLAR

Additionally, the higher socioeconomic status of the graduates will transfer to their children, resulting in a projected "transfer" of income to their children for almost **\$121 million** per year once all of these children who will enter the labor force are employed.



TELEPHONE: 210-630-4690
WEBSITE: QUESTSA.ORG

