

# Project QUEST 25 Year Economic Impact Study

This study measures the impact of Project QUEST on the San Antonio metropolitan area economy over the organization's 25-year history.

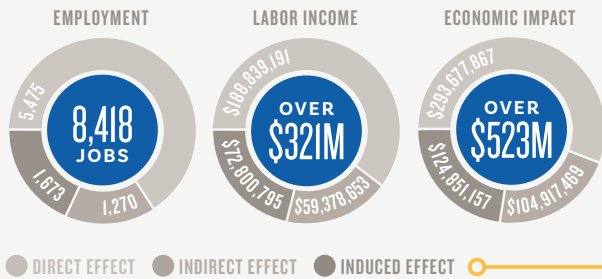
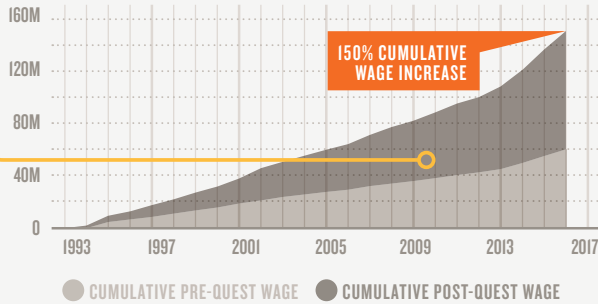
The study is based on actual data provided by Project QUEST. Data includes information on each graduate's annual wage before they entered the QUEST program, the wage they earned in their first job upon graduation from the program, their career track, and the date they graduated from the program.

Funded in part by the City of San Antonio and conducted by Steven R. Nivin, PH.D., LLC

**GRADUATES INCREASE IN INCOME**  
**823,937,723**

▲ \$9.51 PER FUNDED DOLLAR

The cumulative wages of these graduates have increased by approximately 150%.



**ECONOMIC IMPACT OF SPENDING**  
**523,446,493**

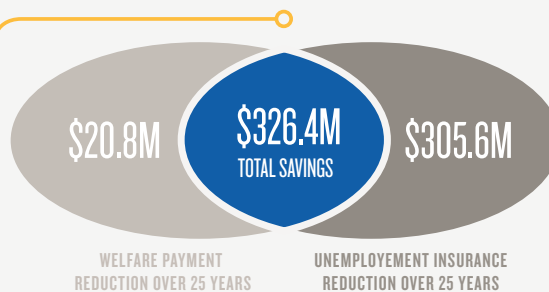
▲ \$6.04 PER FUNDED DOLLAR

The increase in income earned by graduates has led to an increase in personal spending, catalyzing even more economic growth.

**SOCIAL SAVINGS**  
**326,404,377**

▲ \$3.77 PER FUNDED DOLLAR

With an increasing number of graduates, the savings to society from reduced welfare and unemployment insurance payments has grown accordingly.



## GRADUATE DEMOGRAPHICS

**75**  
% WOMEN

**61**  
% HISPANIC

**12**  
% AFRICAN AMERICAN

**68**  
% RECEIVE PUBLIC ASSISTANCE

**34**  
% SINGLE PARENTS

**TOTAL IMPACT OVER 25 YEARS**  
**\$1.67 BILLION** ▲ \$19.32 PER FUNDED DOLLAR

Additionally, the higher socioeconomic status of the graduates will transfer to their children, resulting in a projected "transfer" of income to their children of **\$98,909,785 million** per year once all of these children who will enter the labor force are employed.

For detailed information on the methodology used to calculate these effects, please see the full report at:

## CONTACT

**DAVID J. ZAMMIELLO**  
Executive Director

Telephone: (210) 630-4690  
Email: david@questsa.org



[questsa.org/quest\\_impact](http://questsa.org/quest_impact)